

**TOWN OF GRANBY, MASSACHUSETTS  
COMPREHENSIVE WASTEWATER MANAGEMENT PLAN**

**PROJECT PROGRESS REPORT  
NOVEMBER 1, 2010**

**REPORTING PERIOD**

This report summarizes AECOM's planning services for the CWMP for the period from September, 2010 through October 31, 2010.

**PROJECT ACTIVITIES**

The following were AECOM's ongoing project activities for the CWMP:

- Met with DEP regarding findings of the soil survey and evaluation of the Study Areas.
- Reviewed documentation from DEP file room to obtain additional information for the rating criteria matrix.
- Edited 'Rating Criteria Matrix' to incorporate comments from the DEP.
- Developed future flow estimates for the areas of need that were identified.
- Compiled solutions for Areas that may not be able to sustain individual septic systems.
- Began costing out alternative solutions to individual on-site systems including a centralized option, community options, etc.
- Met with Sewer Committee to discuss options for creation of a Sewer District
- Met with Planning Board to discuss Sewer District.

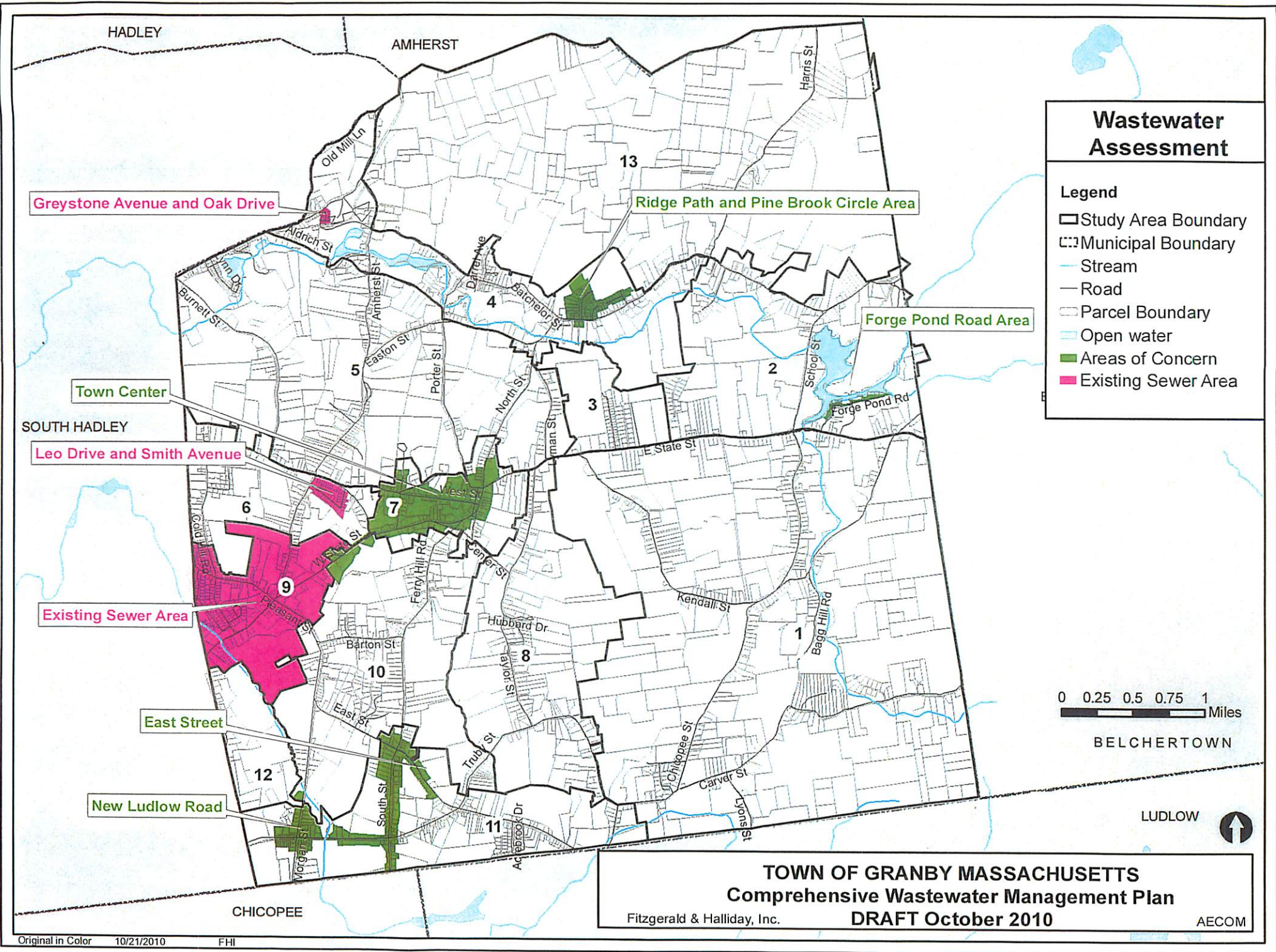
**PROJECT BUDGET**

The following table summarizes the budget status for the CWMP as of August 1, 2010:

<b>Progress Report</b>	<b>Contract Budget</b>	<b>Budget Invoiced this Period</b>	<b>Total Budget Invoiced to Date</b>	<b>Budget Remaining</b>	<b>Percent of Budget Remaining</b>
<b>November 2010</b>	<b>\$400,000</b>	<b>\$48,900.00</b>	<b>\$321,500.00</b>	<b>\$78,500.00</b>	<b>20%</b>

**FOUR WEEK LOOK-AHEAD**

- Meet with Planning Board, Sewer Committee, and town council to discuss sewer districts. Provide update of matrix and needs areas.
- Schedule Public Information Session after this meeting.
- Cost out alternatives for needs areas, draw conclusions, and complete CWMP.



### Wastewater Assessment

- Legend**
- ▭ Study Area Boundary
  - Municipal Boundary
  - Stream
  - Road
  - ▭ Parcel Boundary
  - Open water
  - Areas of Concern
  - Existing Sewer Area

0 0.25 0.5 0.75 1 Miles

BELCHERTOWN

LUDLOW



**TOWN OF GRANBY MASSACHUSETTS**  
**Comprehensive Wastewater Management Plan**  
**DRAFT October 2010**

Fitzgerald & Halliday, Inc.

AECOM

**TABLE 2-  
TOWN OF GRANBY  
CWMP  
RATING CRITERIA MATRIX**

CRITERIA NAME	DESCRIPTION	Southeastern Granby		Forge Pond Area & Former Seminary		School area on East State Street		Batchelor Street and Reservoir Area	
		Number	Points	Number	Points	Number	Points	Number	Points
<b>CRITERIA POINTS</b>	Total Number of Lots	484		201		71		338	
Actual Failure	Total Number of Developed Lots	325		139		61		259	
Higher Potential for Failure	Total Number of Undeveloped Lots	159		62		10		79	
Septic System/Water Quality issues	Number of Acres per Study Area	4428		1261		278		1011	
	Number of Acres for Developed Lots	1635		519		108		645	
Actual or High Potential for Failure <sup>(1)</sup>	Lots with multiple repairs	0	0	1	25	0	0	3	75
	Lots with conditional pass	1	25	0	0	0	0	4	100
	Lot Size less than or equal to 1/4 acre and private well	1	25	12	300	0	0	6	150
	lot Size less than 5,000 S.F. and public water supply	0	0	0	0	0	0	0	0
	Failure with documentation of a repair	2	50	2	50	2	50	4	100
	No documentation of repair for Failure	3	75	2	50	0	0	0	0
	Tight Tank	0	0	2	50	0	0	0	0
			175		475		50		425
Potential for Failure	Lots with Septic Tank <1,000 gallons	0	0	4	60	1	15	7	105
	Lots with Groundwater Limitation <sup>(2)</sup>	45	680	20	294	2	23	12	181
	Lots with Soil Limitations <sup>(3)</sup>	30	450	7	102	0	0	8	120
	Frequent pump-outs	0	0	1	15	0	0	1	15
			1130		471		38		421
Septic System/Water Quality issues	Systems Built before 1995 (Title 5)	190	950	81	405	49	245	170	850
	Lot Size greater than 1/4 acre and less than 1/2 acre	24	120	11	55	25	125	59	295
	System within 100 feet of Surface Water body Wetlands or Streams	274	1370	119	595	16	80	147	735
	System located within 100 Year Flood Plain	190	950	112	560	18	90	135	675
	System within IWPA Area	22	110	10	50	16	80	68	340
	System within Zone II Aquifer Recharge Area	0	0	0	0	0	0	0	0
			3500		1665		620		2895
	Total Criteria Points for Study Area		4804.5		2611.45		707.65		3741.2
	Rating Criteria Points per Developed Acres		2.94		5.03		6.55		5.80

<sup>(1)</sup> Information from Board of Health Records.

<sup>(2)</sup> Information from Board of Health Records. In most study areas, approximately 51% of the records had water depth information.

<sup>(3)</sup> Information from Board of Health Records. In most study areas, approximately 70% of the records had soil information

**TABLE 2-  
TOWN OF GRANBY  
CWMP  
RATING CRITERIA MATRIX**

CRITERIA NAME	DESCRIPTION	Burnett St., Amherst St. & Lyn Drive		Cold Hill Rd, West St, Finn's Hill		Town Center		Taylor Street & Truby Street	
		5		6		7		8	
		Number	Points	Number	Points	Number	Points	Number	Points
<b>CRITERIA POINTS</b>	Total Number of Lots	389		188		177		212	
Actual Failure 25	Total Number of Developed Lots	283		152		150		149	
Higher Potential for Failure 15	Total Number of Undeveloped Lots	106		36		27		63	
Septic System/Water Quality issues 5	Number of Acres per Study Area	2158		493		360		1295	
	Number of Acres for Developed Lots	879		320		245		681	
Actual or High Potential for Failure <sup>(1)</sup>	Lots with multiple repairs	1	25	1	25	2	50	0	0
	Lots with conditional pass	3	75	1	25	0	0	0	0
	Lot Size less than or equal to 1/4 acre and private well	2	50	6	150	8	200	0	0
	lot Size less than 5,000 S.F. and public water supply	0	0	0	0	0	0	0	0
	Failure with documentation of a repair	5	125	1	25	6	150	1	25
	No documentation of Repair for Failure	3	75	1	25	1	25	0	0
	Tight Tank	0	0	0	0	0	0	0	0
			350		250		425		25
Potential for Failure	Lots with Septic Tank <1,000 gallons	3	45	4	60	0	0	1	15
	Lots with Groundwater Limitation <sup>(2)</sup>	21	317	23	340	45	680	30	445
	Lots with Soil Limitations <sup>(3)</sup>	36	535.5	41	612	12	178.5	44	663
	Frequent pump-outs	1	15	0	0	1	15	0	0
			913		1012		873		1123
Septic System/Water Quality issues	Systems Built before 1995 (Title 5)	187	935	121	605	100	500	116	580
	Lot Size greater than 1/4 acre and less than 1/2 acre	21	105	52	260	30	150	4	20
	System within 100 feet of Surface Water body Wetlands or Streams	169	845	56	280	44	220	102	510
	System located within 100 Year Flood Plain	111	555	20	100	44	220	52	260
	System within IWPA Area	1	5	0	0	63	315	0	0
	System within Zone II Aquifer Recharge Area	0	0	0	0	0	0	0	0
			2445		1245		1405		1370
		Total Criteria Points for Study Area	3707.6		2506.75		2703		2518.05
	Rating Criteria Points per Developed Acres	4.22		7.83		11.03		3.70	

\*Note: Area 9 is the Five Corners area and is already sewered

<sup>(1)</sup> Information from Board of Health Records.

<sup>(2)</sup> Information from Board of Health Records. In most study areas, approximately 51% of the records had water depth information.

<sup>(3)</sup> Information from Board of Health Records. In most study areas, approximately 70% of the records had soil information

**TABLE 2-  
TOWN OF GRANBY  
CWMP  
RATING CRITERIA MATRIX**

CRITERIA NAME	DESCRIPTION	South Street and Pleasant Street		New Ludlow Rd. & East Street (south)		Industrial Area		Northern Granby	
		10 Number	Points	11 Number	Points	12 Number	Points	13 Number	Points
<b>CRITERIA POINTS</b>	Total Number of Lots	259		327		46		207	
Actual Failure	Total Number of Developed Lots	194		255		15		61	
Higher Potential for Failure	Total Number of Undeveloped Lots	65		72		31		146	
Septic System/Water Quality issues	Number of Acres per Study Area	1062		838		274		3609	
	Number of Acres for Developed Lots	569		410		125		351	
Actual or High Potential for Failure <sup>(1)</sup>	Lots with multiple repairs	5	125	3	75	0	0	1	25
	Lots with conditional pass	3	75	7	175	0	0	1	25
	Lot Size less than or equal to 1/4 acre and private well	0	0	2	50	2	50	0	0
	lot Size less than 5,000 S.F. and public water supply	0	0	0	0	0	0	0	0
	Failure with documentation of a repair	3	75	6	150	0	0	0	0
	No documentation of Repair for Failure	3	75	4	100	0	0	0	0
	Tight Tank	0	0	1	25	0	0	0	0
			350		575		50		50
Potential for Failure	Lots with Septic Tank <1,000 gallons	2	30	9	135	0	0	1	15
	Lots with Groundwater Limitation <sup>(2)</sup>	36	544	58	869	0	0	8	113
	Lots with Soil Limitations <sup>(3)</sup>	37	561	41	612	0	0	3	51
	Frequent pump-outs	1	15	1	15	0	0	0	0
			1150		1631		0		179
Septic System/Water Quality issues	Systems Built before 1995 (Title 5)	147	735	206	1030	8	40	43	215
	Lot Size greater than 1/4 acre and less than 1/2 acre	4	20	58	290	2	10	3	15
	System within 100 feet of Surface Water body Wetlands or Streams	162	810	125	625	13	65	109	545
	System located within 100 Year Flood Plain	62	310	77	385	5	25	37	185
	System within IWPA Area	5	25	1	5	0	0	0	0
	System within Zone II Aquifer Recharge Area	0	0	0	0	0	0	11	55
			1900		2335		140		1015
	Total Criteria Points for Study Area		3399.6		4540.65		190		1244.25
	Rating Criteria Points per Developed Acres		5.97		11.07		1.52		3.54

<sup>(1)</sup> Information from Board of Health Records.

<sup>(2)</sup> Information from Board of Health Records. In most study areas, approximately 51% of the records had water depth information.

<sup>(3)</sup> Information from Board of Health Records. In most study areas, approximately 70% of the records had soil information